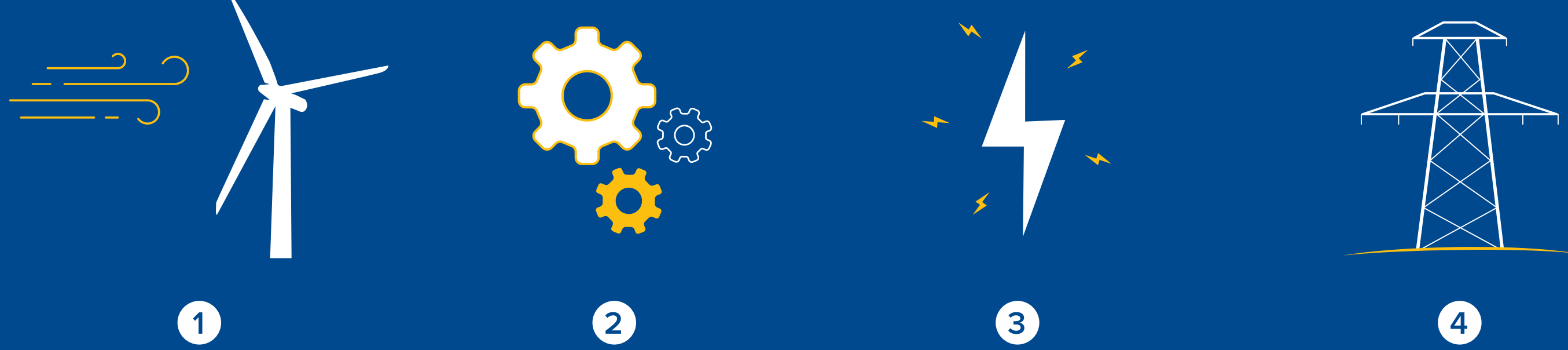




In 2014 ContourGlobal's wind power plants produced **283GWh** of clean renewable wind energy.

How Does Wind Energy Work?



1 Wind flows over the blades causing them to rotate

2 The rotating blades turn a torque shaft inside a generator. The generator converts the mechanical energy (rotation) into electricity energy

3 The electricity is "transformed" by a transformer from a lower voltage (700 volts) to a higher voltage (30,000) volts. Higher voltage electricity is easier to "carry" over transmission lines

4 The electricity is carried by the transmission lines to places like cities where it is needed to provide electric power

Pros

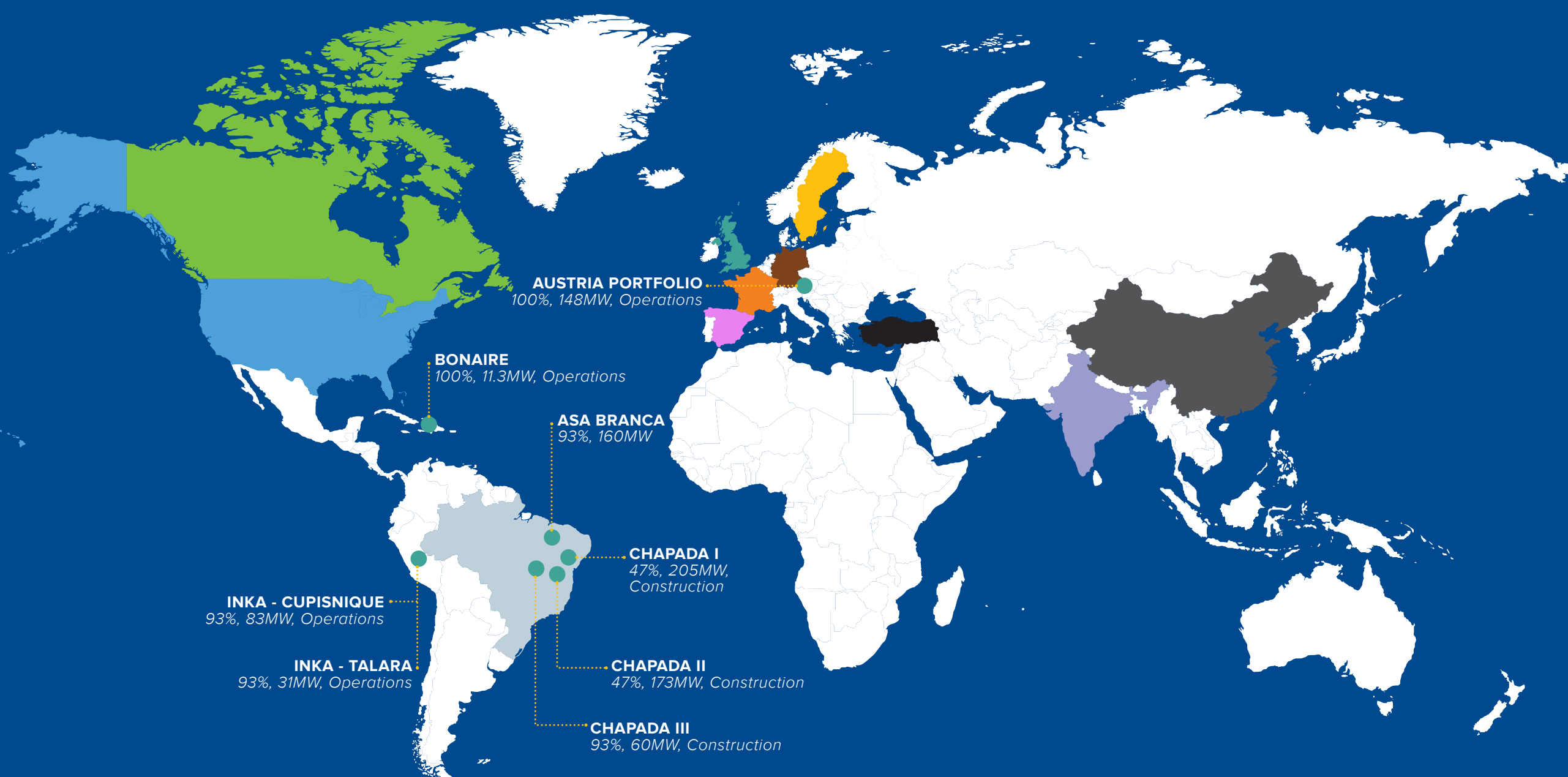
- ✓ Clean Energy with zero emissions
- ✓ Does not require expensive fuel transportation or handling
- ✓ Less dedicated space is needed, when compared to other power plant technologies
- ✓ Very low maintenance costs

Cons

- ✗ Because generation depends upon a variable resource—wind—output is not entirely predictable
- ✗ Turbines cost more per MW than conventional generation
- ✗ The rotating blades can harm wildlife particularly birds and bats
- ✗ Some people do not like the look or sound of wind turbines

Global Wind Footprint

LATAM & Caribbean: 723 MW Europe: 172 MW



COUNTRY	MW	% SHARE
PR China	23,196	45.1
Germany	5,279	10.2
USA	4,854	9.4
Brazil	2,472	4.8
India	2,315	4.5
Canada	1,871	3.6
United Kingdom	1,736	3.4
Sweden	1,050	2.0
France	1,042	2.0
Turkey	804	1.6
Rest of the World	6,852	13.3
TOTAL TOP 10	44,620	87
WORLD TOTAL	51,473	100

COUNTRY	MW	% SHARE
PR China	114,609	31.0
USA	65,879	17.8
Germany	39,165	10.6
Spain	22,987	6.2
India	22,465	6.1
United Kingdom	12,440	3.4
Canada	9,694	2.6
France	9,285	2.5
Italy	8,663	2.3
Brazil	5,939	1.6
Rest of the World	58,473	15.8
TOTAL TOP 10	311,124	84.2
WORLD TOTAL	369,597	100

ContourGlobal's Wind Impact

Today's ContourGlobal operating installed wind capacity is 616MW



That's enough to power 102,000 US households



616MW of Installed Capacity can also displace 612,995 tons of CO2 emissions



This is also equivalent to removing 126,205 cars from the roads



Or planting 1,577,561 trees
Think about this: there are 24,000 trees in New York's Central Park, so the 616MW of installed capacity replaces the need to plant trees in 66 similar parks

In 2014 ContourGlobal's wind power plants have produced 283GWh of clean renewable wind energy

WHAT WAS THE IMPACT? WHAT DOES IT COMPARE TO?



Lighting 4 LED lamps in every US house for a month



193,000 tons of CO2



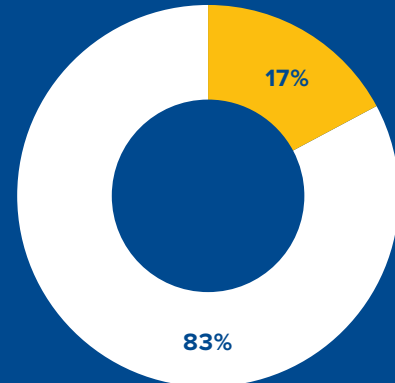
455,000 barrels of oil consumed



2,500 tanker trucks of gasoline

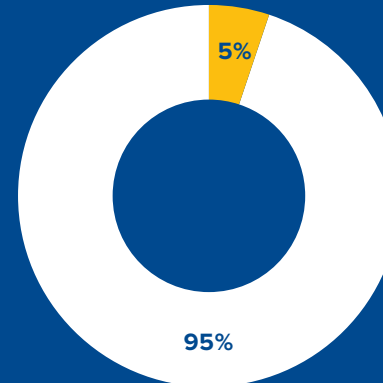
ContourGlobal Wind Portfolio Snapshot

CG 2015 OPERATIONS SNAPSHOT: INSTALLED CAPACITY



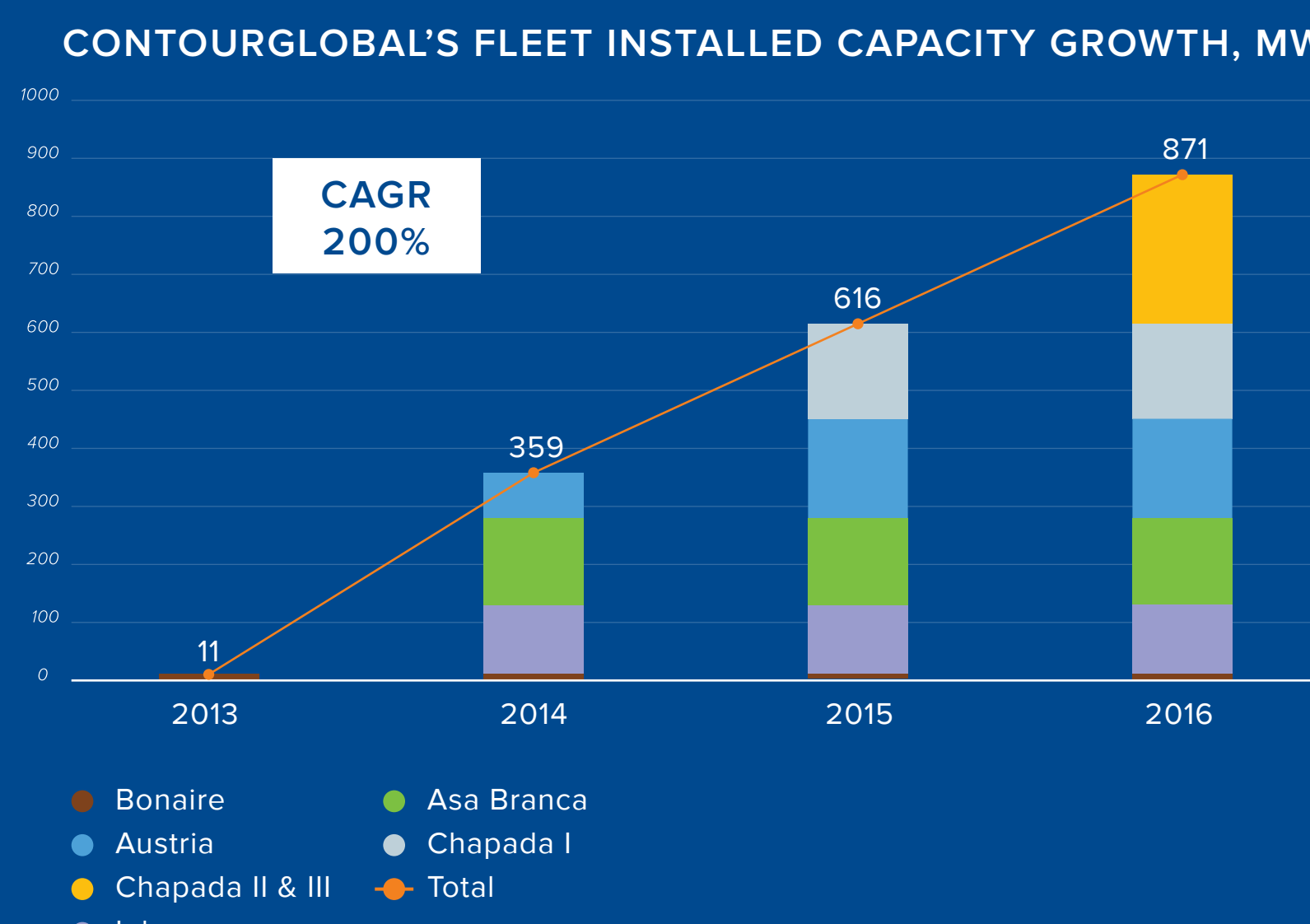
- Wind Power Plants
- Rest of ContourGlobal's Fleet

CG'S 2014 PRODUCTION SNAPSHOT



- Wind Generation
- Rest of ContourGlobal's Fleet Generation

CONTOURGLOBAL'S FLEET INSTALLED CAPACITY GROWTH, MW



- Bonaire
- Austria
- Inka
- Asa Branca
- Chapada I
- Chapada II & III
- Total

Wind by the Numbers

51.5

The record number of GW of wind power installed in 2014, bringing the total installed global capacity to more than 369.6 GW at the end of 2014

608

In 2014, wind power avoided over 608 million tons of CO2 emissions globally

8,000

The number of parts in a wind turbine

241,100

The number of wind turbines spinning around the world

3%

The percentage of global electricity supplied by wind power

19%

The amount of global electricity that could be supplied by wind power in 2030

\$99.5bn

The amount in \$USD invested in wind power globally, making it one of the fastest growing industrial segments in the world

8MW

The largest wind turbine in the world is the Vestas 8MW turbine with a rotor diameter of 164 meters

2,472

The number of megawatts of wind power installed in Brazil in 2014 - Brazil has become a leader in the South American wind energy market, reaching total capacity of more than 5.9 GW

24

The number of countries having more than 1,000MW of wind power installed across the world, 11 countries have installed more than 5,000MW

601,500

The number of people employed worldwide by the wind industry

